

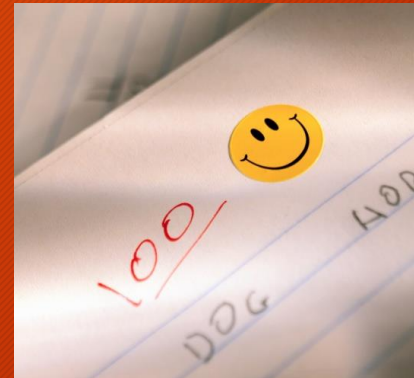
8<sup>th</sup> Grade Course  
Request Presentation  
(Current 7<sup>th</sup> Graders)

Yeah!

We are moving on.....

# How do I get out of the 7<sup>th</sup> grade?

- First and second semester averages must be 70 or above in all core classes.
- Attendance **MUST** be acceptable.
- You must pass the **STAAR** test or possibly attend summer school.



# 8<sup>th</sup> grade is not very different from 7<sup>th</sup> grade.....

- There will still be teams...8-1 or 8-2. These are chosen randomly, **we do not honor team requests.**
- The 5 core subjects will be required; Reading or Expo, English, Math, Science, and U.S. History.
- Pre-AP (Honors) course work may still be taken.
- You will still have two electives periods.

# Continued.....

- The opportunity to take classes that may receive high school credit will be available.
- 8<sup>th</sup> graders are only required to take ½ year of PE or none at all, if you had PE/athletics all year in 6<sup>th</sup> AND 7<sup>th</sup> grade.
- If you have had two years of PE, you do not have to sign up for PE. You may chose a different elective.

# Electives

- There are full year (both semesters) electives and there are  $\frac{1}{2}$  year (1 semester) electives.
- On the back of the Course Request Sheet you will find brief descriptions of all electives that are offered.
- You may have the following scenarios to fulfill your elective choices:
  - \* 2 Full year electives.... like Band and Athletics
  - \* 1 full year and 2 half year....like Athletics and  $\frac{1}{2}$  year Art and  $\frac{1}{2}$  year Construction
  - \* 4 half year....like  $\frac{1}{2}$  year Theatre Arts,  $\frac{1}{2}$  Family and Community Services,  $\frac{1}{2}$  year Art, and  $\frac{1}{2}$  PE

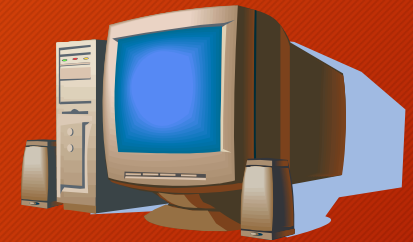
# Full Year Elective Choices....

- Spanish (only sign up if you had Spanish all year in 7<sup>th</sup> grade)
- Band
- Orchestra
- Choir
- Theatre Arts
- Art
- Gateway to Technology 1 or 2
- Principles of Information Technology
- Principles of Human Services



# 1/2 Year (semester) Elective Choices...

- Theatre Arts
- Art
- Construction Tech
- Touch Systems Data Entry (keyboarding)
- Nutrition and Wellness
- College and Career Readiness



\*\*\*\*\* If you took construction, touch systems, nutrition, or college and career readiness in 7<sup>th</sup> grade, you MAY NOT take them again - do not list them as a choice!\*\*\*\*\*

\*\*\*\*\* Semester classes for theater and art may not be available depending on the number of students enrolled in theater or art for the full year\*\*\*\*\*

# Electives that offer High School Credit

- With successful completion of the following classes, 8<sup>th</sup> graders will earn .5 or 1 High School elective credit toward graduation:

Touch Systems Data Entry - .5

Prin. Of Human Services - 1.0

Prin. Of Information Technology - 1.0

Gateway to Technology 1 or 2 - .5

- If you successfully complete Spanish in 7<sup>th</sup> **AND** 8<sup>th</sup> grade you will earn 1 High School elective credit toward graduation for:

**Spanish 1**

However, you must still take 2 additional years of Spanish in High School to fulfill graduation requirements.





# Spanish

- You must have completed Spanish in 7<sup>th</sup> grade with a passing grade.
- If you successfully complete BOTH years (grade 7 and grade 8) you will receive (1) high school elective credit, but it does not go towards your high school GPA.
- You will still be required to take two additional years of Spanish in high school.



# Orchestra and Band

- Must have participated in 7<sup>th</sup> grade. You will be placed in the orchestra or Band, in which you qualify, according to the Orchestra and Band directors.
- Orchestra and Band require a *yearlong commitment*.
- You must remain academically eligible to participate in UIL competitions.



# Athletics or PE/Wellness Choices

- Choices for PE or athletics credit are:

½ year PE/Wellness

Full year PE/Wellness

PE Tennis (full year)

Boy's Athletics (full year)

Girl's Athletics (full year)

Partner PE (1/2 year partner pe, ½ year pe)

(by application ONLY)



# Athletics

- This is available for those who wish to participate in competitive volleyball, football, basketball, and/or track/cross country.
- Practice is REQUIRED and goes until approximately 5 pm. Transportation is the responsibility of the parents.
- This requires a YEARLONG COMMITMENT. When you are not in season you will be participating in off-season workouts.
- A physical exam is required to be in athletics.
- Students must pass or remain academically eligible in all classes to participate in the team sports.

# Should I take Pre-AP/Honors classes?

There are (3) Pre-AP/Honors class options:  
English, Science, and US History.

When making the decision to sign up for a Pre-AP/Honors class, very careful consideration should be applied. Below are some *guidelines* to follow ensuring your success in that particular subject:

## Did I:

- Maintain an average of 85% or higher in that particular subject whether regular or enhanced.
- Have a conversation with my current teacher and he/she thinks I am ready to pursue Pre-AP/Honors in the upcoming school year.
- Turn in all work (no missing or late work) and attend school regularly.
- Show high performance on STAAR in that subject area.
- Met expectation on course specific assessment

# Pre-AP/Honors information continued...



- There will be a generic Pre-AP/Honors contract to be signed by student and parent and turned in with course selection sheet.
- Students will not be placed in a Pre-AP/Honors class without this contract.
- Once a student is placed in a Pre-AP/Honors class, you can only get out of the class at the end of the first 9 weeks and/or at the end of first semester.

# Advanced Math

- Algebra is a Math option in 8<sup>th</sup> grade if test results support placement. The placement test will be administered in May.
  - If you successfully completed Algebra in 7<sup>th</sup> grade, you will be placed in Geometry for 8<sup>th</sup> grade.
- \* Remember in High School you will be required to complete (4) additional courses of Math to fulfill graduation endorsement and the high school math classes taken in middle school do not count towards the high school GPA.
- \* All students will be placed in a regular math class until the math department chair provides us with a list of students that should be placed in an advanced math class.

# Math Acceleration

- You WILL be placed in Math Acceleration if you do not pass the Math portion of the STAAR test.
- Math Acceleration will take the place of one elective. If this happens, you will only have the opportunity to choose one full year or two half year electives





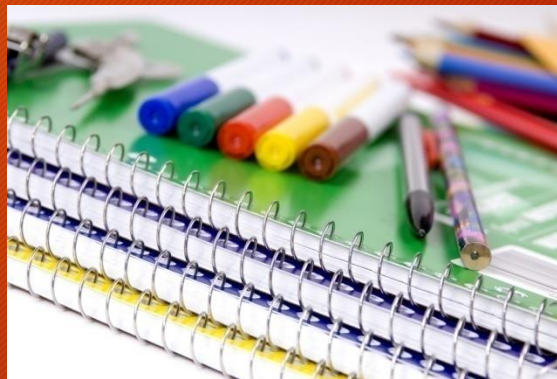
# READ 180



- At the beginning of the school year all students are administered the SRI (Scholastic Reading Inventory.)
- If you do not meet the expectation on this assessment you will be placed in a Read 180 class.
- Read 180 will then take the place of one of your electives.

# Course Request Sheet (orange sheet)

- Please remember....these are REQUESTS!
- There are no *guarantees* that these are the classes you will receive. We will do our best to place you in the classes you request, but there are times that it will just not work in your schedule.
- Request sheets and Pre-AP/Honors agreements are due February 5th



Questions?

**The End!**